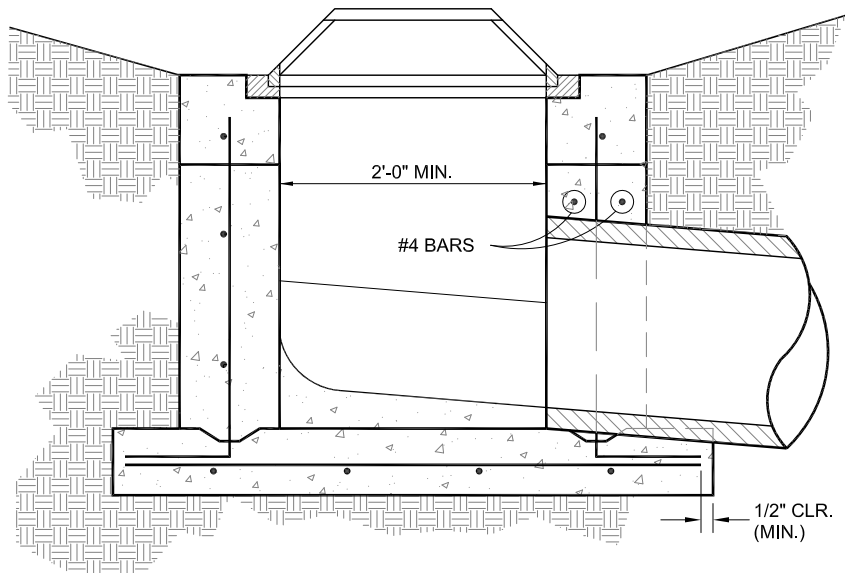


CROSS SECTION



LONGITUDINAL SECTION

NOTES:

1. INLET TO BE SET ON SUBGRADE COMPACTED TO 95% OF STANDARD PROCTOR (ASTM D-698)
2. PIPE DIAMETER, DEPTH AND DIRECTION SHALL BE DICTATED BY THE PROJECT GRADING AND DRAINAGE PLAN.
3. PRECAST TOPS MUST BE SET IN PLACE USING A FULL BED OF MORTAR.
4. INLET SHALL BE EQUIPPED WITH A DEETER FOUNDRY, INC. NO. 4470 GRATE AND NO. 2410 FRAME.
5. ALL CONCRETE SHALL BE CLASS "AS", 4000 PSI 28 DAY STRENGTH, MINIMUM.

INLET SIZE	WALL THICK. (IN.)	FLATTOP THICK. (IN.)	BOTTOM THICK. (IN.)
2'X4'	6	8	6
32"X32"	8	8	8
3'X3'	6	8	6
3'X4'	6	8	6
3'X5'	6	8	6
4'X4'	6	8	6
4'X4'	8	8	6
5'X5'	6	9	6
62"X62"	8	9	8
7'X7'	8	10	8
3'X8'	6	8	6
4'X8'	8	8	8

CITY OF LAKELAND  
ENGINEERING DIVISION

**STANDARD  
4470 INLET**

REV.	DESCRIPTION	DATE
1	ORIGINAL ISSUE	8/2008
2	DIMENSION TABLE	1/2011

**STANDARD  
4470 INLET**  
NOT TO SCALE